



Graphic Communication

S4 Exam

January 2014

Duration 1 Hr and 30 Mins

Total Marks – 60

Attempt ALL questions.

All dimensions are in mm.

All sketches and drawings are in third angle projection.

You may use rulers and compasses for sketching.

Black or blue ink must be used for answering questions, pencil may be used for sketching.

Name

Seat

Question 1.

1. The two different documents shown below were produced using DTP software.

Document 1

A **B**

MARKZWARE

REALLY EASY

Are you currently slaving away migrating all your content? Because, whether you are working on Windows® or Macintosh®, Adobe® Microsoft® or Quark®Press®, moving any data back and forth is difficult. Not to mention all the re-formatting!

If you want to save time and big headaches, use Markzware conversion tools. Believe me, this software makes it easy to move your data and it's much faster than re-creating it from scratch. So, the next time you are slaving away with content, work easy and think MARKZWARE.

CONVERSION TOOLS
FOR DESIGNERS, PRINTERS & PUBLISHERS
ID2Q, PUB2ID, Q2ID, and MARKZTOOLS

CALEB CLAUSET | 2C Design
"Q2ID is truly an amazing piece of engineering and the simplicity of use (File > Open, done) is great... (It's) the best \$200 I spent. Paid for itself the day I bought it. Can't get a much better ROI than that."

JOIN OUR AFFILIATE PROGRAM TODAY!

markzware.com/conversions **MARKZWARE**

C

Document 2

D **E**

Settling the Stage

Dreams are like paper, they tear so easily.
—Gilda Butler

Green Theory

I Challenge You:
take one eco-sip within a month of reading this article to modify your habits and the materials you use every day in your professional lives.

F

(a) State the DTP term for each of the features A to F shown on documents 1 and 2.

A _____ B _____
C _____ D _____
E _____ F _____

6

(b) When designing DTP documents you should think about the principals for an effective display.

(i) In document 2 the designer used green and blue-green as the main colour scheme throughout the display. State the effect that this creates.

1

(ii) State a suitable colour the designer could use in document 2 if he wished to create a contrasting heading.

1

(iii) State one instance where alignment has been used in document 2.

1

(iv) Describe the effect that alignment has on desk top published documents.

1

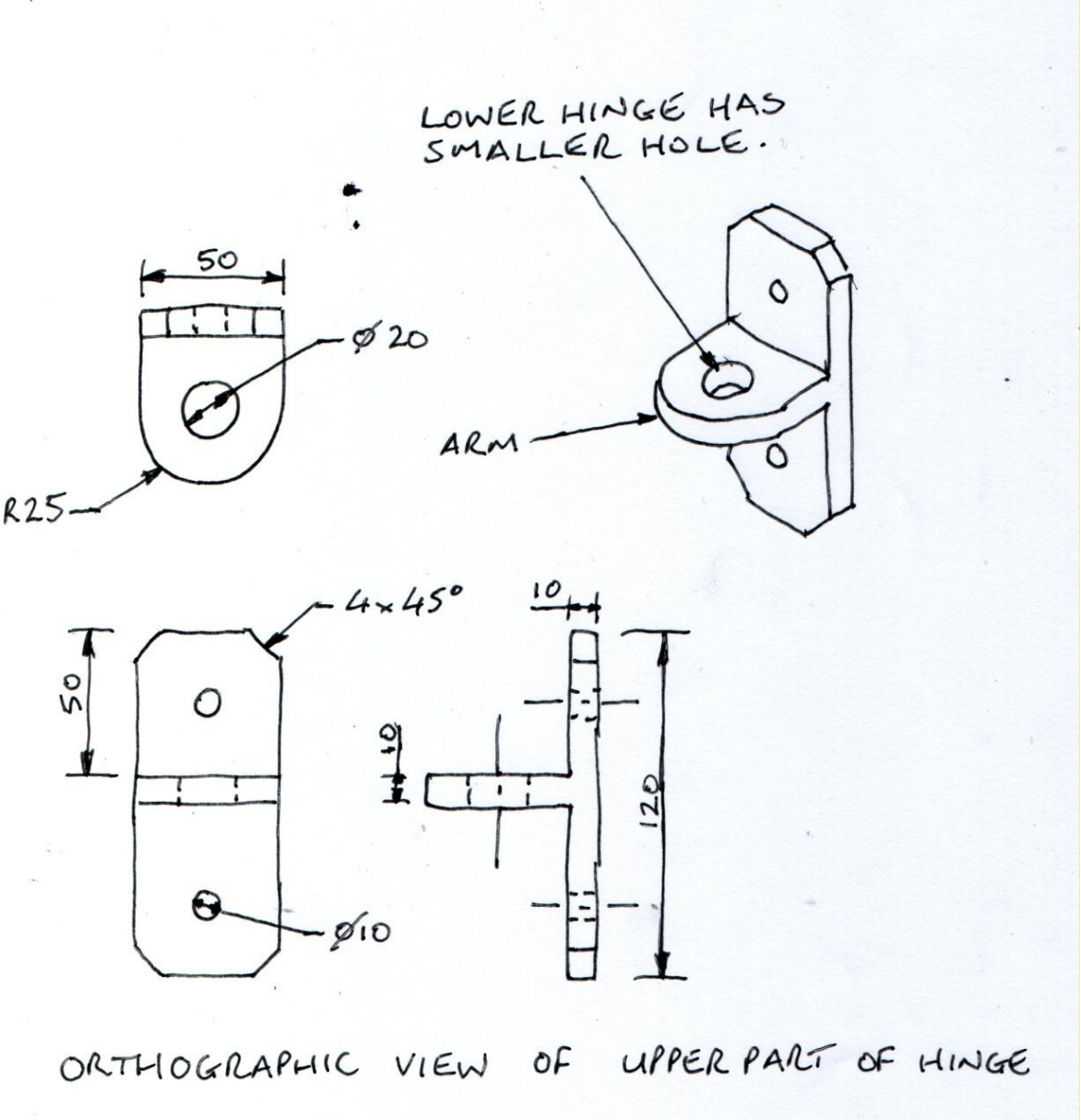
(v) Name the DTP edit used on the alternative heading below for Document 1.



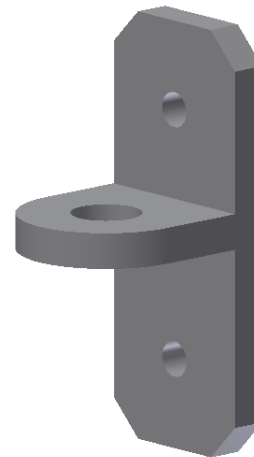
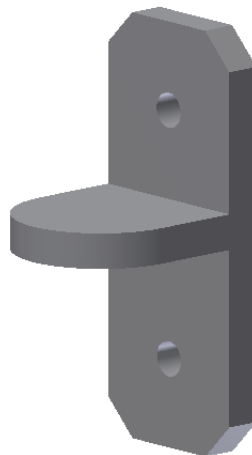
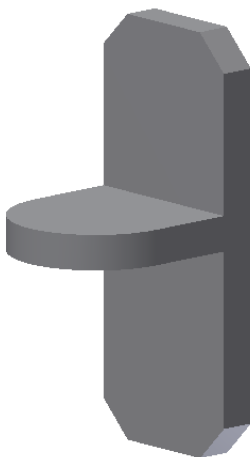
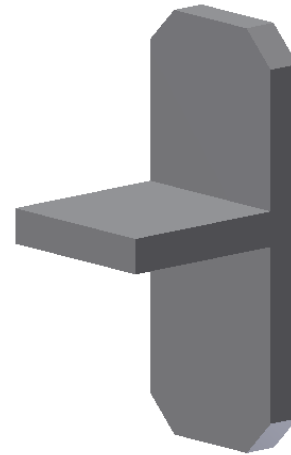
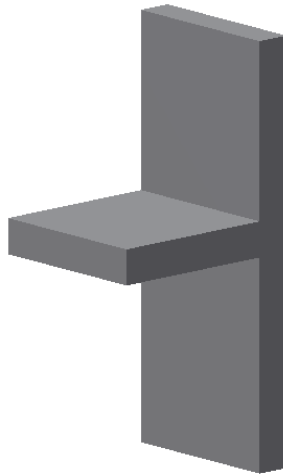
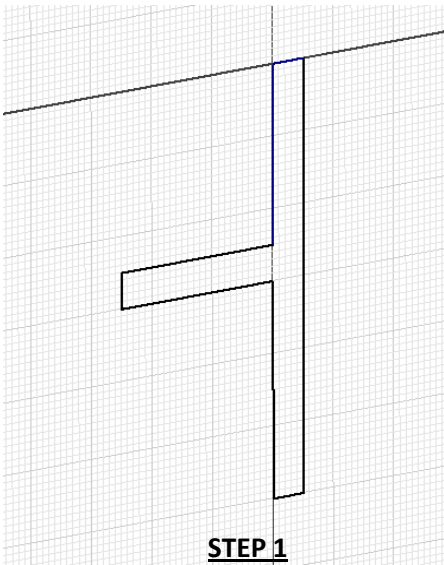
1

Question 2.

A hinge has been designed to attach a wooden gate to a wooden post. A 3D model was produced from preliminary sketches (shown below) created at the design stage.



Below are the steps taken to produce the upper part of the hinge using a commercial 3D modelling software package (e.g. Inventor 2011).



- a) State the size of the extrusion used at step 2. _____ **1**
- b) Describe how you would use a 3D modelling package to get from **step 5** to **step 6** with reference to the dimensions in the preliminary sketches. You may use sketches in the space provided to support your answer.

MARKS

DO NOT
WRITE IN
THIS SIDE
OF THE
MARGIN

c) i) Name the editing command used to get from **step 2** to **step 3**.

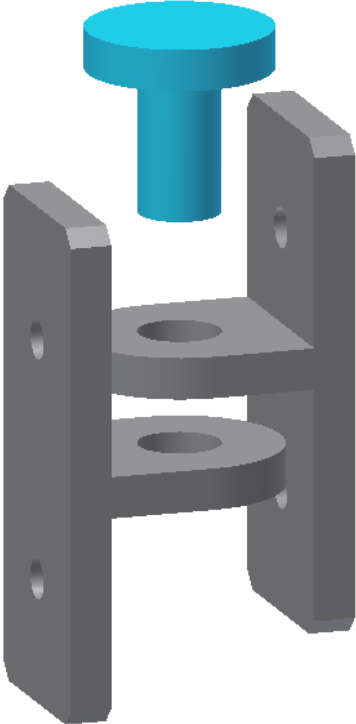
1

ii) Name the editing command used to get from **step 3** to **step 4**.

1

d) A pin would be used to secure both parts of the hinge. Describe, **with reference to dimensions and CAD modelling terms**, how to produce a 3D CAD model of this pin. You must make reference to the dimensions on the preliminary sketch. A suggested form for the pin is shown below. You may use sketches to support your answer.

Suggested form for the pin.



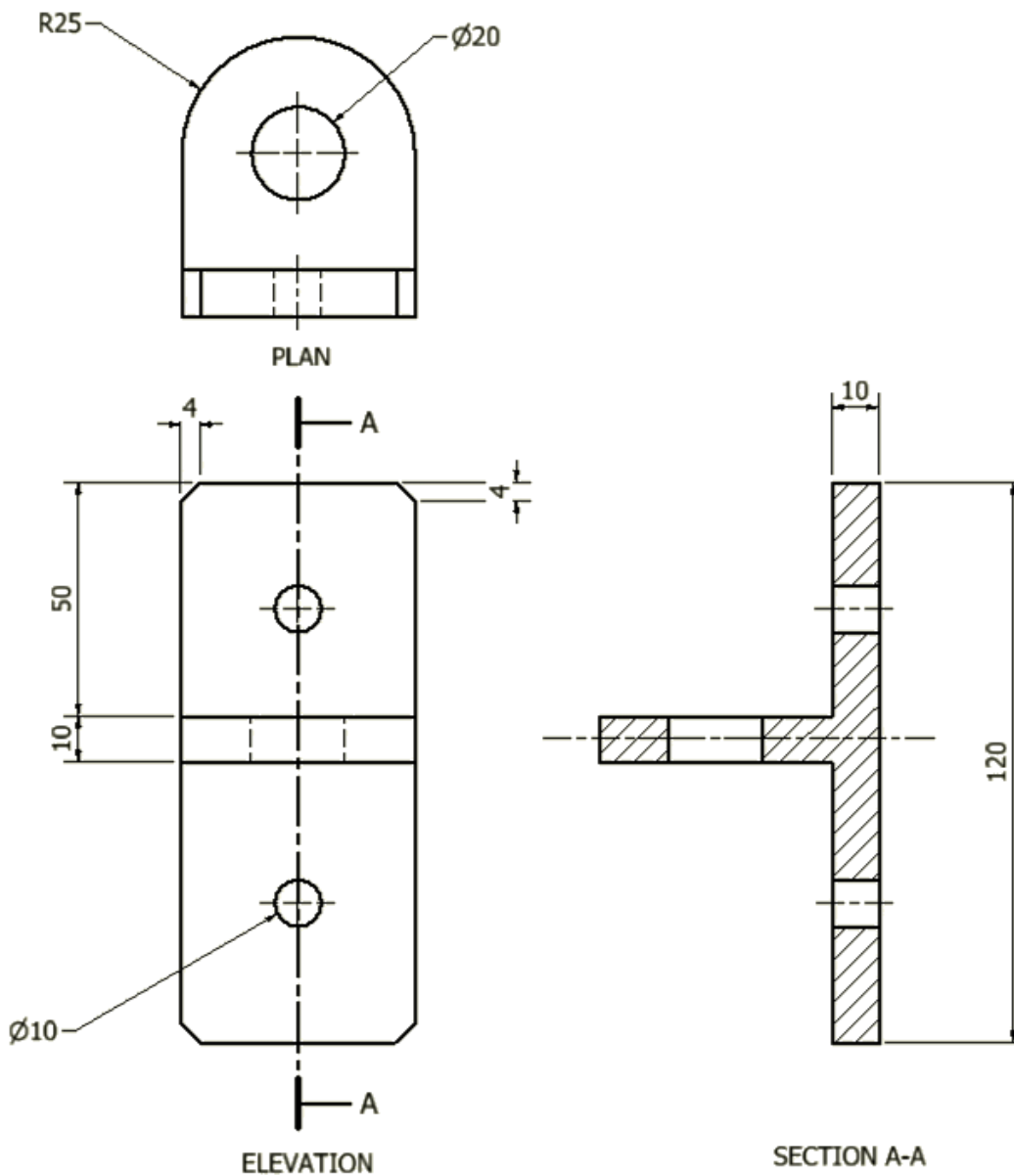
3

e) An Orthographic production drawing is produced from the 3D CAD model as shown below.

There are errors in the drawing. State 3 errors in the production drawing. You may annotate the drawing to support your answer.

- i) _____
- ii) _____
- iii) _____

3



Orthographic Production drawing of the hinge

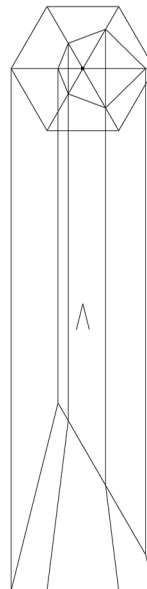
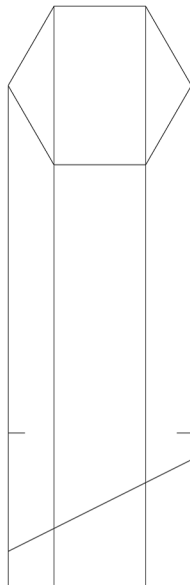
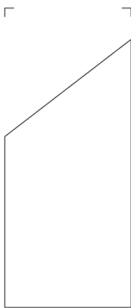
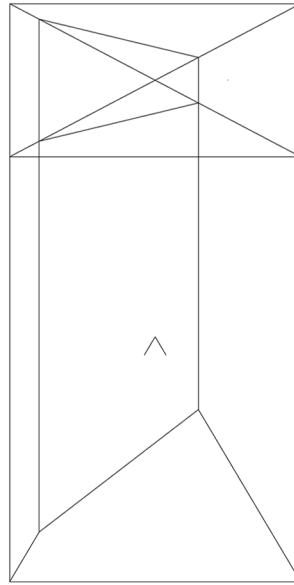
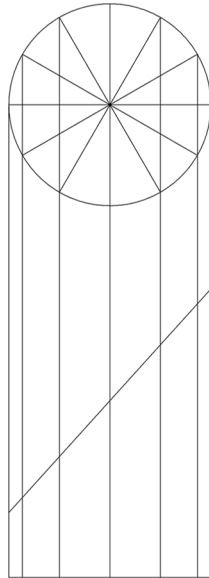
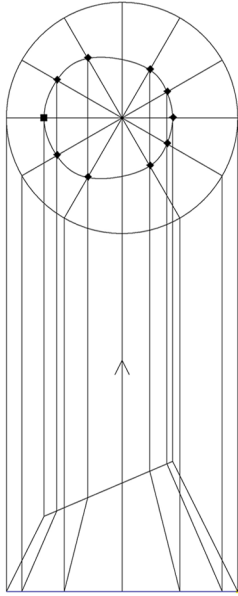
Total Marks: 12

Question 3.

MARKS

DO NOT
WRITE IN
THIS SIDE OF
THE MARGIN

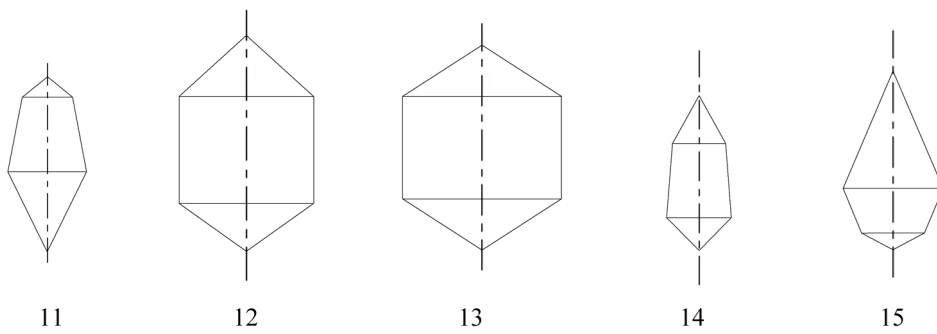
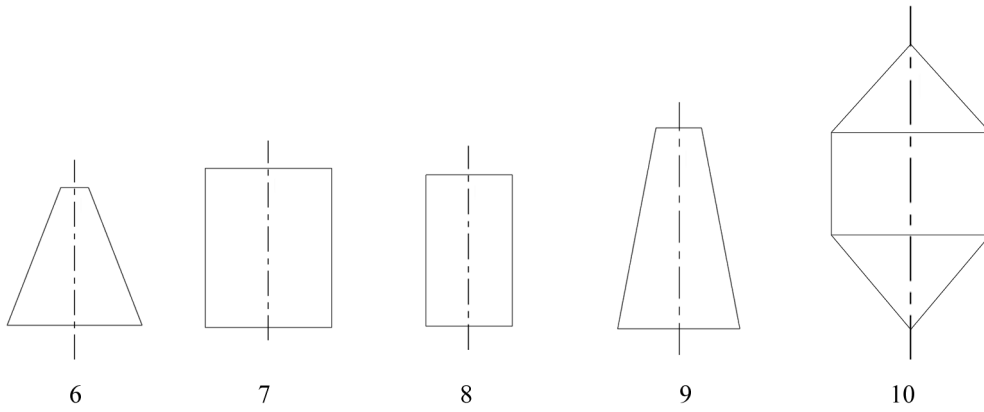
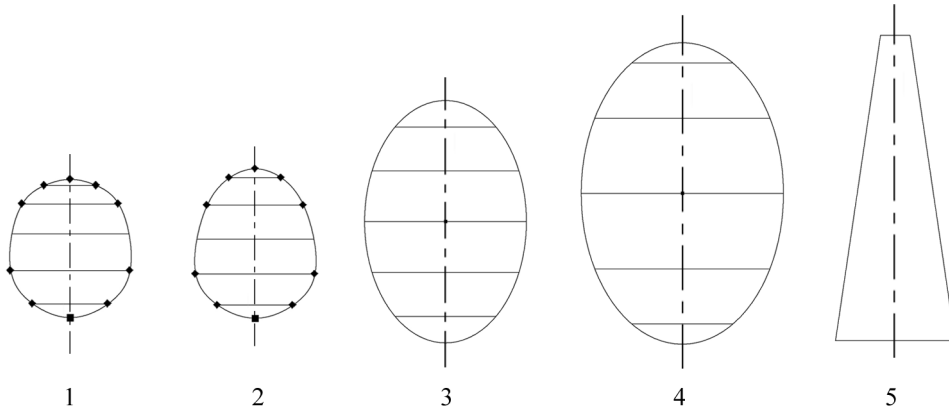
Six cut geometric forms are shown as orthographic views. Options for true shapes are given opposite and contain only six correct true shapes which match the cut geometric forms. Place the number of the matching true shape in the box under each cut geometric form in the orthographic views.



6

Total Marks: 6

True shape options



Question 4.

A company that exports game consoles across Europe is experiencing huge changes in sales figures. The marketing team wish to bring this to the attention of the company directors.

A graphic designer has been asked to produce graphs or charts that make the sales figures more visual for use in promotional graphics. The sales figures are shown below.



Sales figures B	
Games console	Number of sales
PS3	2,380
PS4	4,220
Xbox 360	1,950
Xbox One	5,050
Nintendo Wii	1,790
PS Vita	1,010
Nintendo 3DS	1,270

Sales figures A	
Top European buyers by percentage in December 2013.	
UK Sales	21%
Italian Sales	13%
French Sales	21%
German	16%
Spanish	29%

(a) State the best type of graph or chart to show the **Sales figures A** in December.

1

(b) State one reason for using this type of graph or chart.

1

(c) State the best type of graph of chart to use when representing **Sales figures B** information.

1

(d) State one reason for using this type of graph or chart.

1

Total marks: 4

Question 5.

Plans of a house are shown below.

(a) State the type of plans shown at A, B and C.

A _____ **1**

B _____ **1**

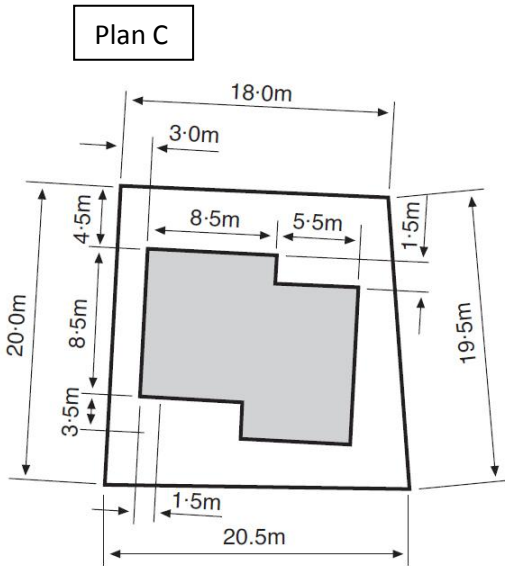
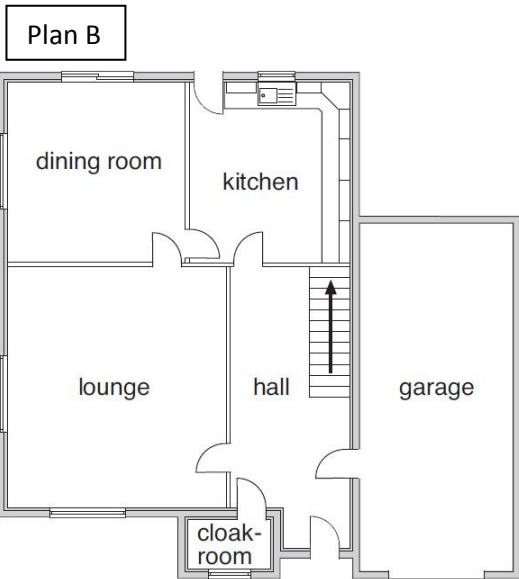
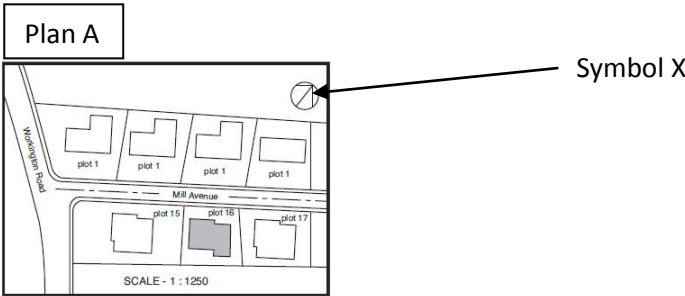
C _____ **1**

(b) State what the **symbol X** on **Plan A** represents.

Symbol X _____ **1**

(c) State an appropriate scale for displaying the information in **Plan A**.

Scale: _____ **1**



Total Marks: 5

Question 6.

The elevation, end elevation and the plan of a pipe elbow are shown in **Drawing X**.

(a) State which 2 of the pictorial views 1 to 6 on the next page represent the pipe elbow shown in **Drawing X**.

(i) _____ (ii) _____

2

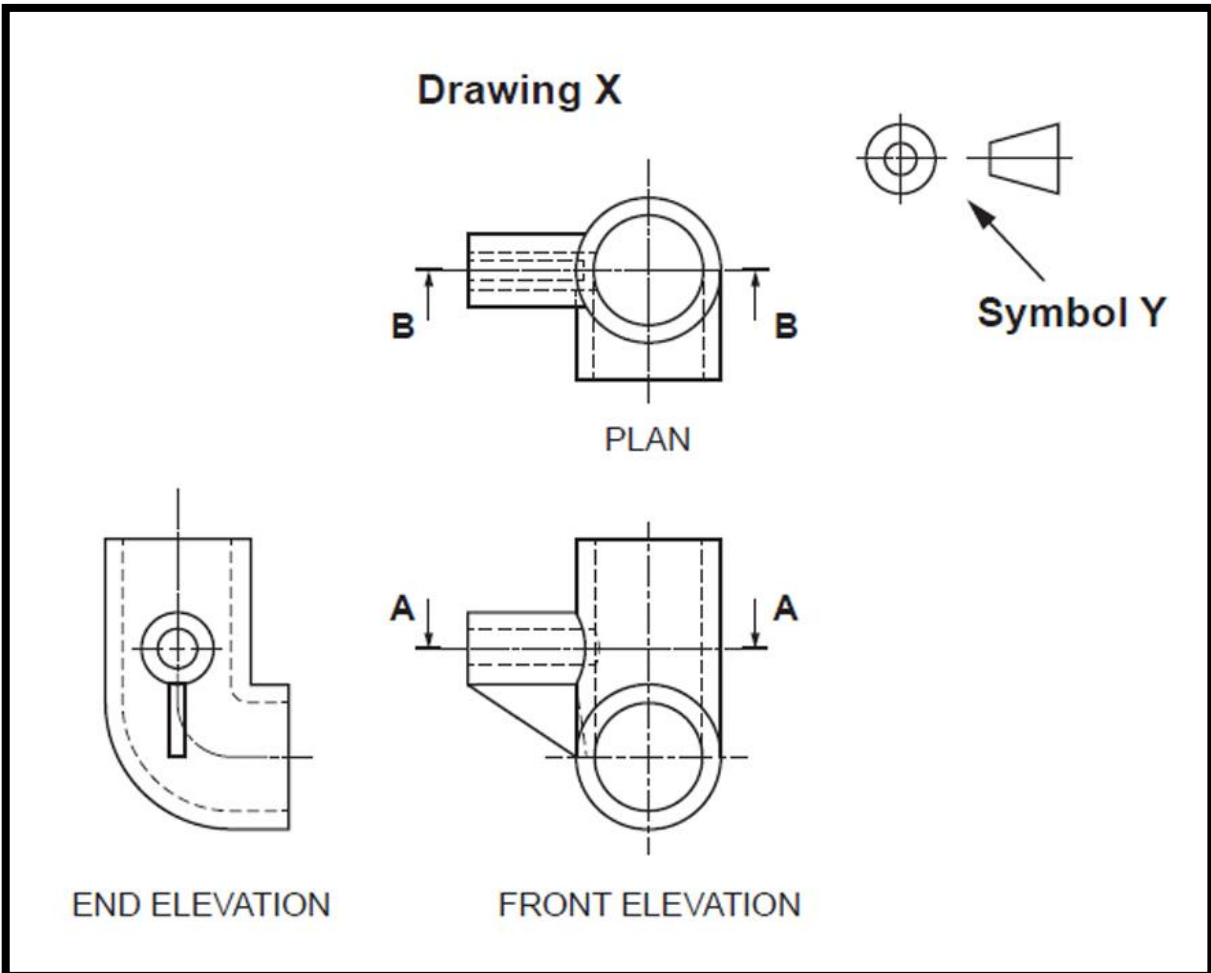
(b) (i) Eight sectional views 7 to 14 are shown on the next page. State the correct sectional view for **Section A-A** and **Section B-B** in the orthographic views.

Section A-A _____ **Section B-B** _____

2

(ii) State one benefit of using a sectional drawing in relation to this pipe elbow.

1



(c) State the name of the symbol shown at Y on the Orthographic drawing.

1

(d) Explain what scale 5:1 means.

1

(e) State where on orthographic drawings, the information scale 5:1 would be found.

1

Pictorial views 1 to 6.



1



2



3



4

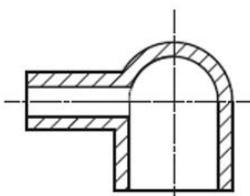


5

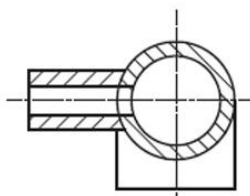


6

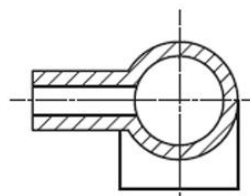
Sectional views 7 to 14



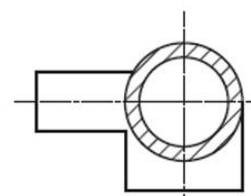
7



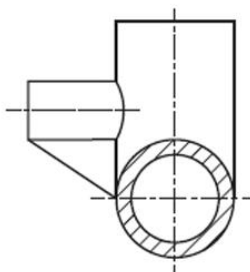
8



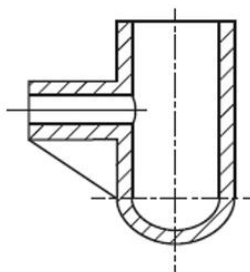
9



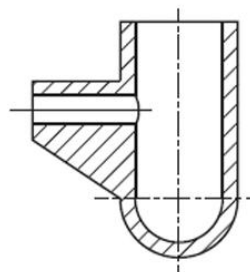
10



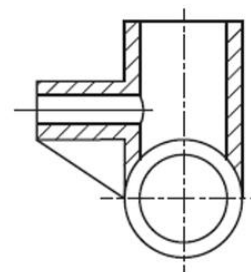
11



12



13



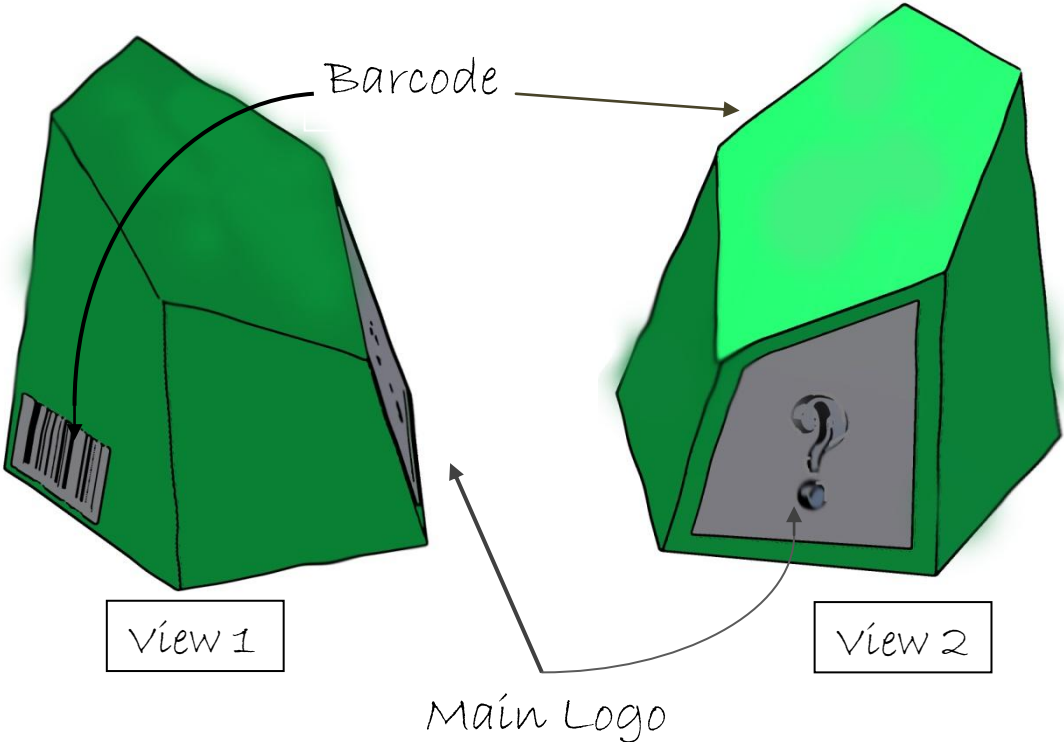
14

Total Marks: 8

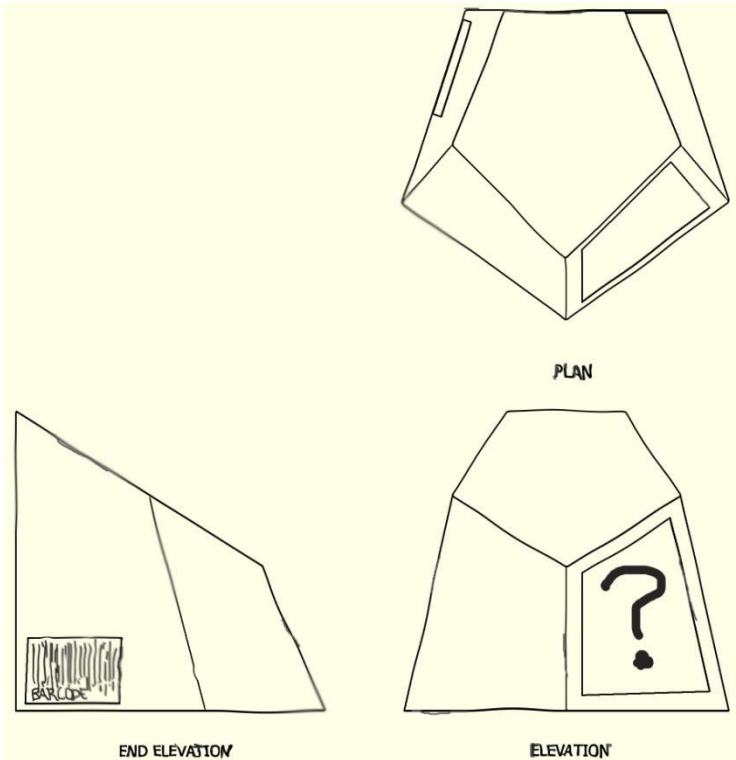
Question 7.

A chocolate confectionary manufacturer is developing a new packaging design for one of its products. One of their designers has made preliminary pictorial and orthographic sketches for a possible new package as shown below.

Preliminary pictorial sketch of package design



Preliminary orthographic sketch of package design



The package would be made from a single sheet of card. A sketched surface development showing the outer surface of the package design is shown below.

Indicate on the surface development below, the location of:

(a) The main logo – using the letter “L”;1

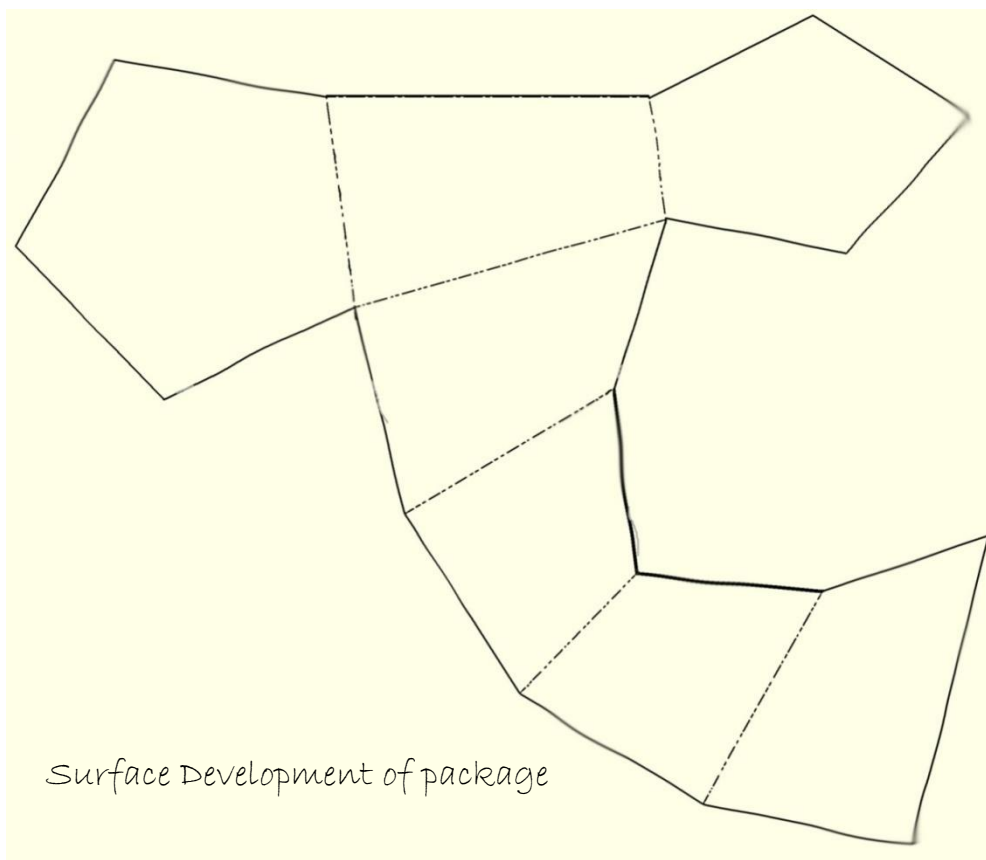
(b) The barcode – using the letter “B”1

(c) The designer plans on using desk top publishing software to produce a promotional leaflet to advertise the package design. State one benefit that DTP has brought to the publishing industry (other than environmental benefits).

1

(d) State **two** ways in which the publisher can reduce the magazine’s impact on the environment.

2



Total Marks: 5

Question 8.

A street liner bus advert promoting “Circulite”, a stylish pendrive, is shown below. Some of the text and original images used in the poster are laid out in the **parts box** in their original form. The original parts and graphics were edited in a DTP package before being placed in the final layout.

(a) State the name of the DTP feature applied to each of the original items to get them ready for use in the final layout (**do not** use the same edit twice).

(i) “The Circulite pendrive by Buzz-IT” slogan – State one DTP edit

1

(ii) Image of the wasp – State one DTP edit.

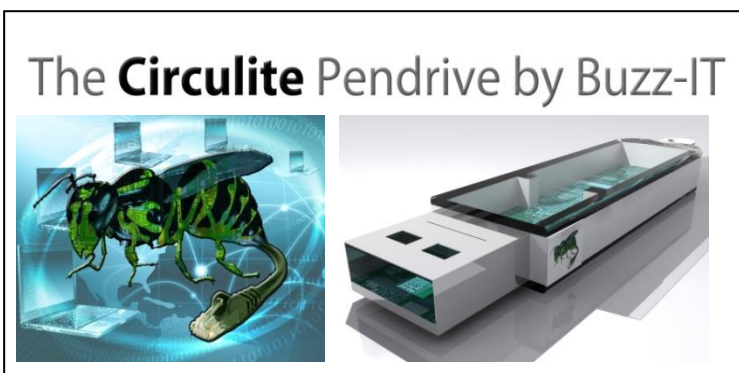
1

(iii) Image of pendrive – State on DTP edit (do not repeat a previous answer).

1

(b) When setting up the layout the designer used the following DTP features: Grid and Snap to Grid. State one way in which the use of Grid and Snap to Grid benefits the designer.

1



Parts Box

Street Liner Bus Advert



(c) An alternative design for the street liner is shown below. State the DTP edit which has been applied to all of the text (do not state alignment).

1

(d) The graphic designer used a blue colour fill on opposing corners and on the "Circulite" product name. What effect does this create?

1

(e) Blue is a receding colour, give an example of an advancing colour.

1

(f) In graphics we use the term The 3 P's to describe different types of Graphic Communication. The street liner display would fall into the category of Promotional Graphics which is listed as the third P, as shown below. State what the other 2 P's stand for (in the correct order).

1

1

2

1

3 Promotional

Alternative design

