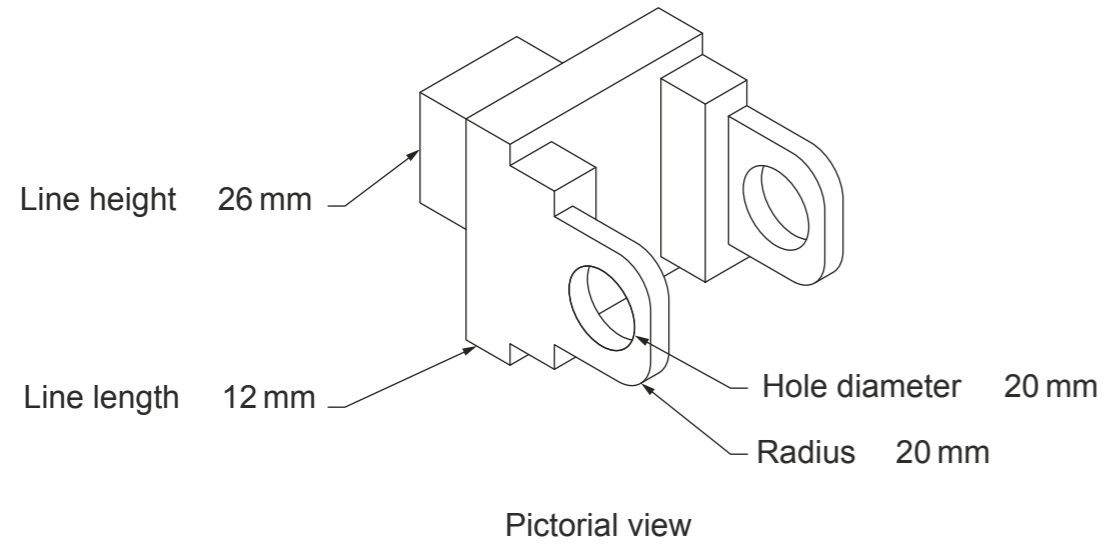


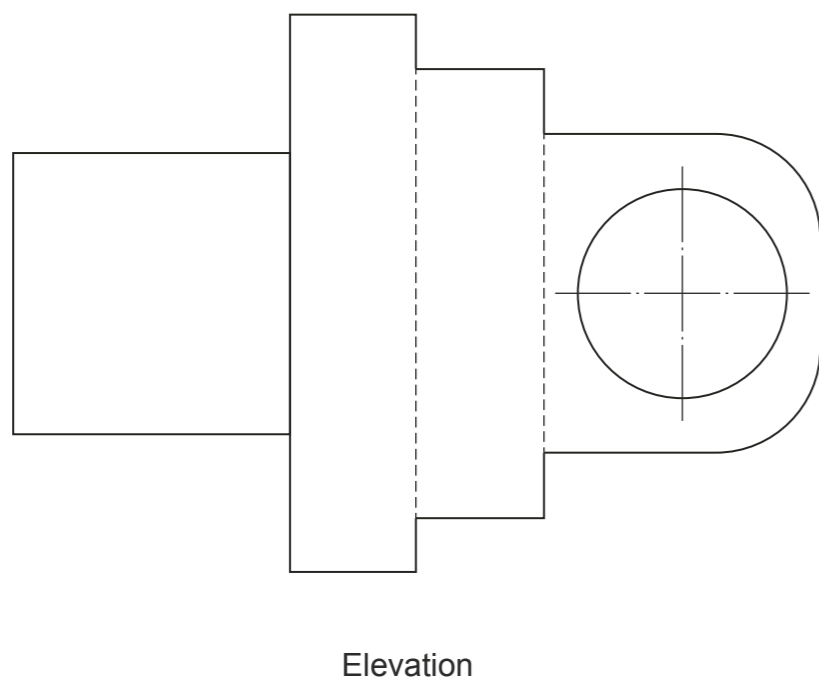
3

A pictorial view of part of a universal joint is shown below. Four sizes are given.

Marks



Sketch, the **four** given dimensions to **British Standards** conventions, on the



1

1

1

1

(4)

5

The types of graphic used in industry fall into three categories, Preliminary, Production and Promotional.

Marks

Explain the purpose and give an example of each type of graphic.

Preliminary

Purpose

.....

.....

1

Example

1

Production

Purpose

.....

.....

1

Example

1

Promotional

Purpose

.....

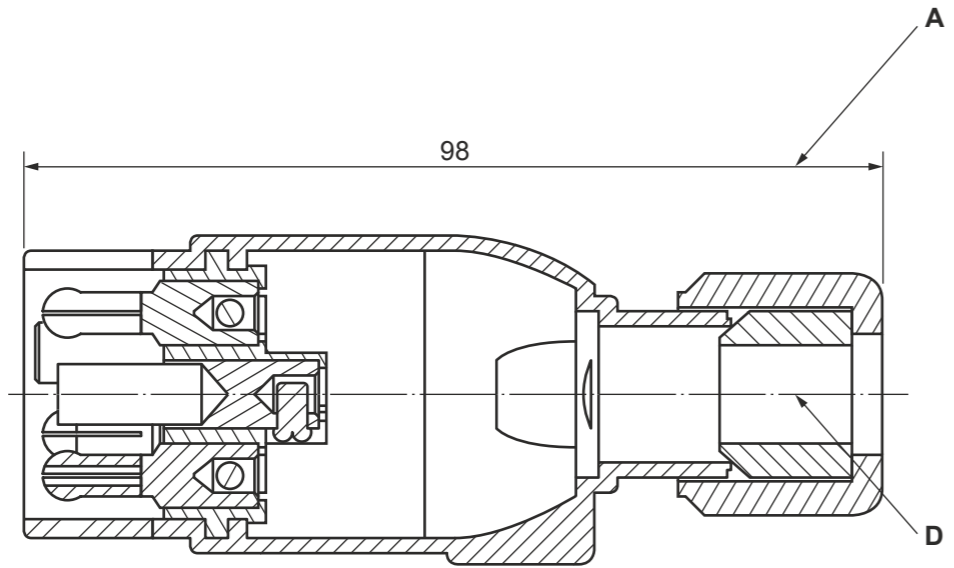
.....

1

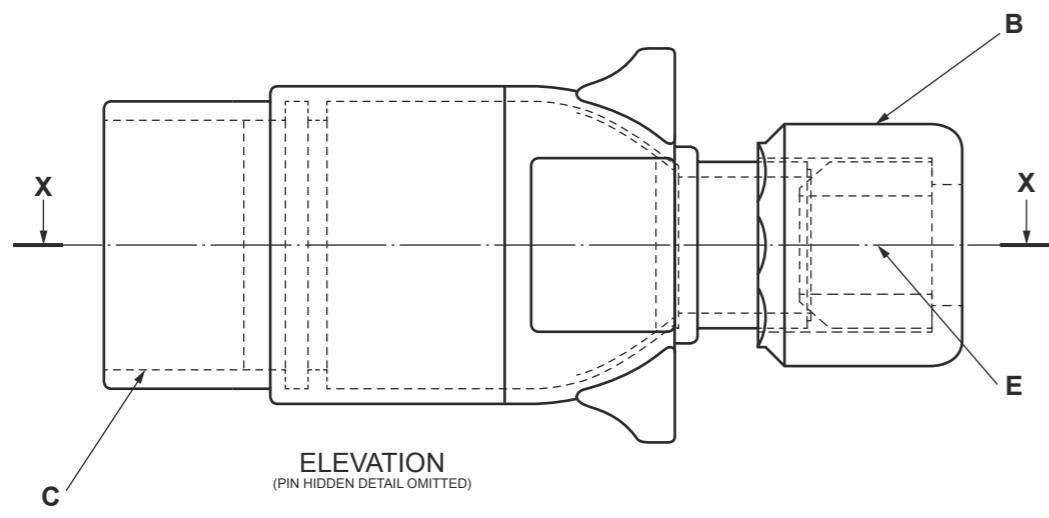
Example

1

(6)



SECTIONAL PLAN ON A-A



ELEVATION
(PIN HIDDEN DETAIL OMITTED)

TITLE Block	
1	5
2	6
3	
4	

The Elevation and Sectional Plan of a caravan plug and title block are shown opposite, drawn to **British Standards**.

(a) The Third Angle Projection Symbol has been placed in the title block. State another six items of information that could be included in the title block to conform to **British Standards**.

- 1 1
- 2 1
- 3 1
- 4 1
- 5 1
- 6 1

(b) Five line types are indicated on the drawing opposite. Complete the table below giving either the description or the application of

Line	Description	Application
A	Continuous thin	
B		Visible outlines and edges
C		Hidden outline and edges
D	Chain thin	
E		Cutting planes

6

(a) State the main reason for the use of British Standards conventions on drawings. *Marks*


.....
 **1**

(b) State the names of the British Standard conventions shown below.

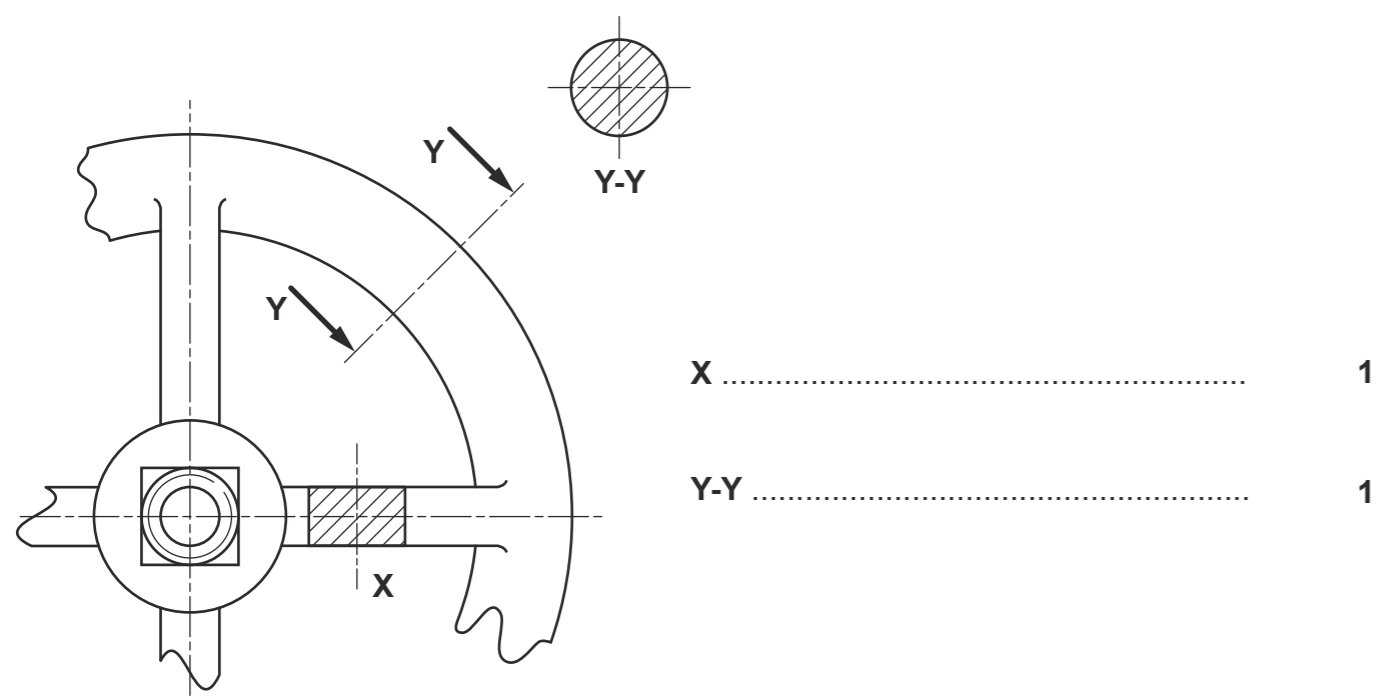
(i)  **1**

(ii) **A/F** **1**

(iii) **R** **1**

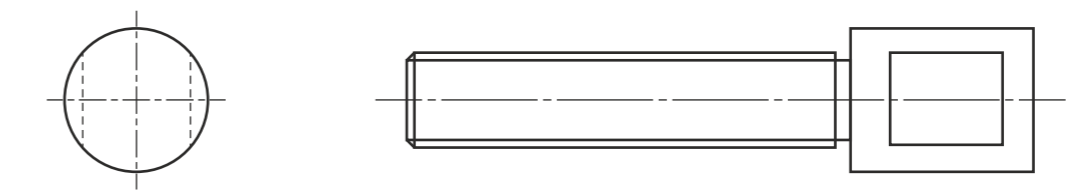
(iv)  **1**

(c) State the names of the **two** types of sections shown at **X** and **Y-Y** on the drawing shown below.



(d) Sketch on the drawing below, using British Standard conventions. *Marks*

- (i) The metric thread diameter 12 mm on the elevation. **1**
- (ii) The flat surface at the right hand end of the component. **1**
- (iii) The external thread detail on the end elevation. **1**



END ELEVATION

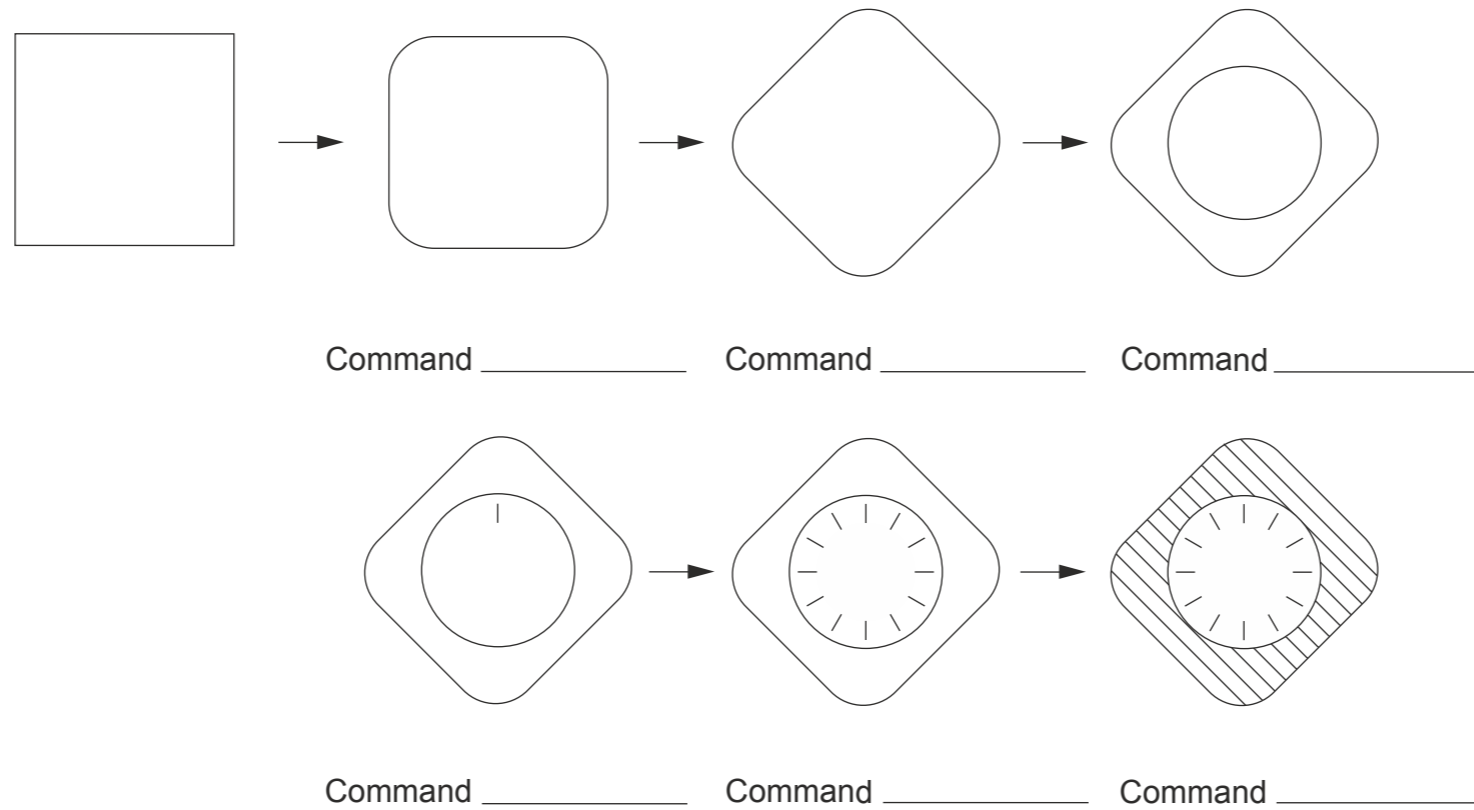
ELEVATION

(10)

6

A company of clock makers are using a **CAD** package to produce working drawings of their new range of clocks.

Marks



6

(b) The clock making company are considering purchasing a colour inkjet or a colour laser printer to produce hard copies of their designs.

State **one** advantage of each type of printer.

Colour Inkjet Printer

.....

1

Colour Laser Printer

.....

1

(8)