



Calderglen High School

Technology Department

Colour Theory

Homework



Powerpoint 1
will help you
with this section

Homework to be completed on time
and returned in homework jotter.

Use the Colour Wheel to help you answer the following questions.

The toy bike shown has been painted using bright colours to make it attractive to children.

(a) Red was chosen for the frame. State two colours that are in contrast with red.

Colour 1 Colour 2 KI 2

(b) State two colours that are in harmony with red.

Colour 1 Colour 2 KI 2

(c) Yellow was chosen for the seat and wheels. Name two tertiary colours that contain yellow.

Colour 1 Colour 2 KI 2

(d) Here is a list of colours.

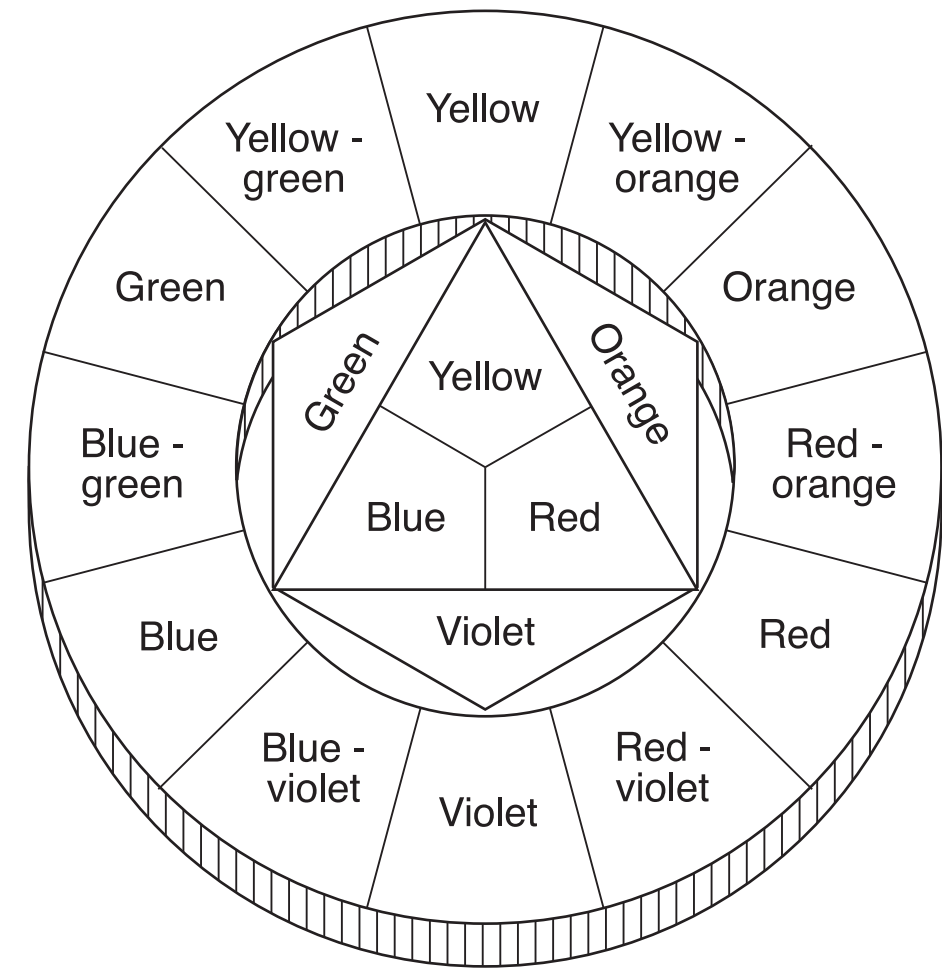
- Red
- Yellow
- Blue
- Green

From the above list, choose one warm and one cool colour.

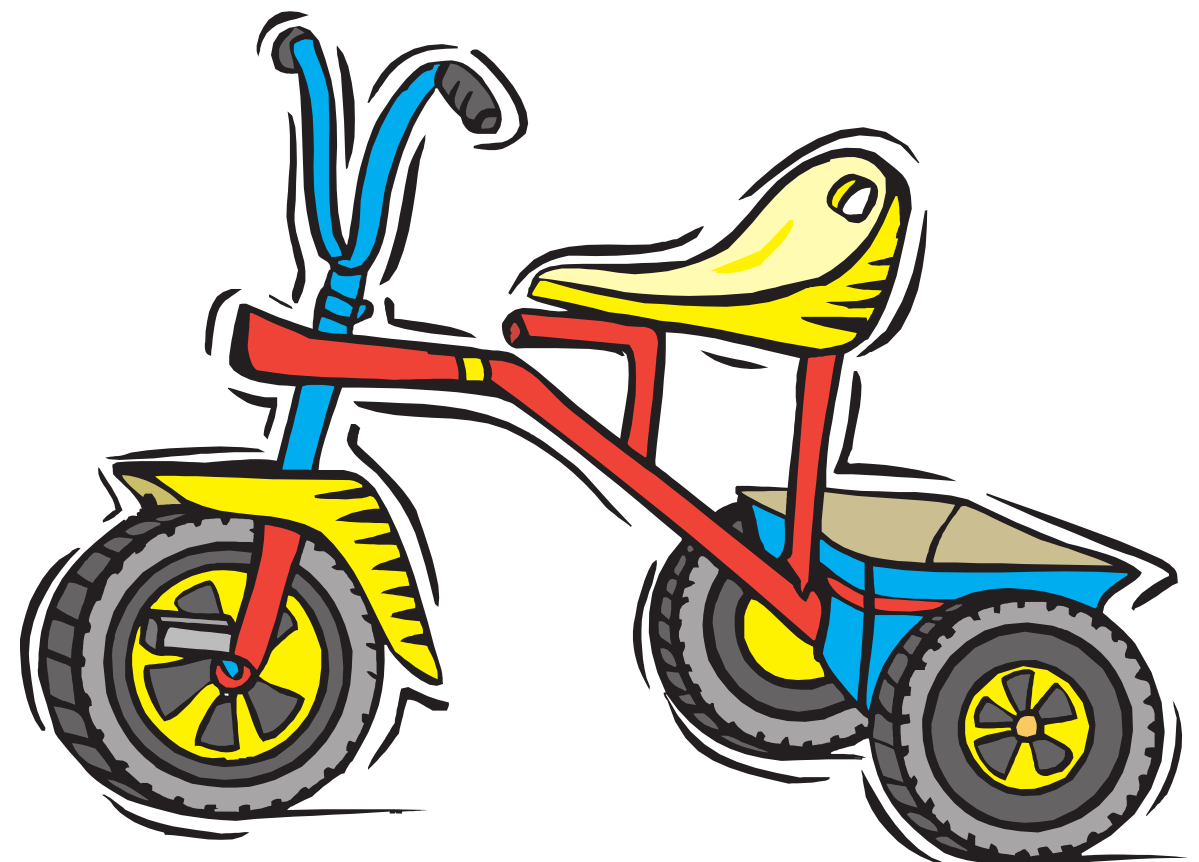
Warm colour Cool colour KI 2

(e) State what must be added to green in order to make it a tint of green.

Answer KI 1



COLOUR WHEEL



Colour theory is an important part of your Illustration and Presentation folio.

(a) Indicate with a tick () in the table below which colours are primary, secondary and tertiary.

COLOUR	PRIMARY	SECONDARY	TERTIARY
Red			
Blue-Green			
Orange			
Green			
Red-Violet			
Yellow			

KI 6

(b) Using the colour wheel given:

(i) state one colour that is in harmony with blue;

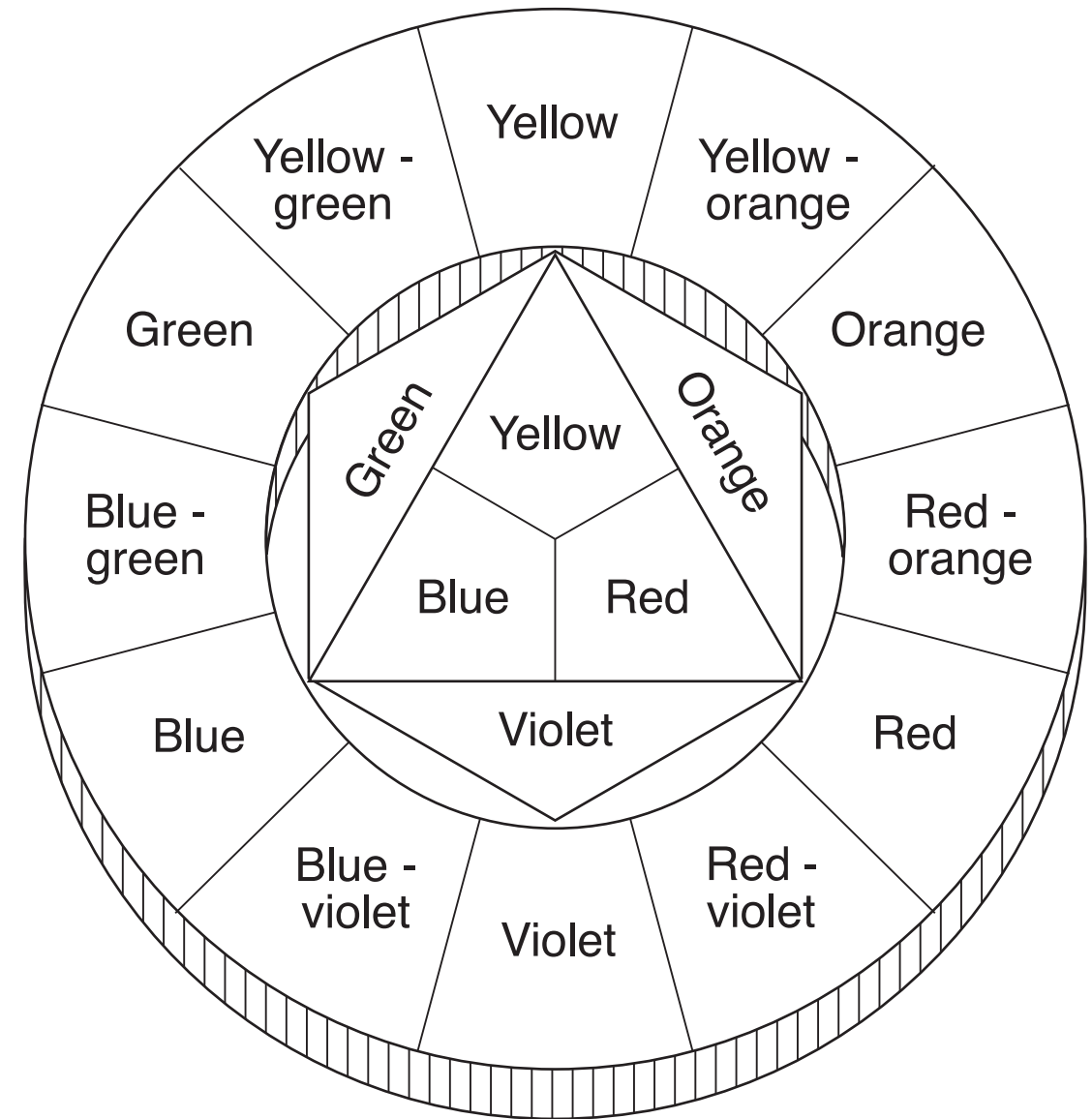
Colour KI 1

(ii) state one colour that is in contrast with blue.

Colour KI 1

(c) State what must be added to a colour to make it a tint of that colour.

Answer KI 1



Colour can be used for many different reasons.

(a) State what is added to red to make it a shade of red.

Answer KI 1

(b) State what is added to red to make it a tint of red.

Answer KI 1

(c) State two tertiary colours that contain blue.

Colour Colour KI 2

(d) State what must be added to a primary colour in order to obtain a tertiary colour.

Answer KI 1

(e) Colours can be used to create different moods and feelings. State what colour is associated with the following.

(i) To represent happiness.

Colour

(ii) To represent that something is cool.

Colour

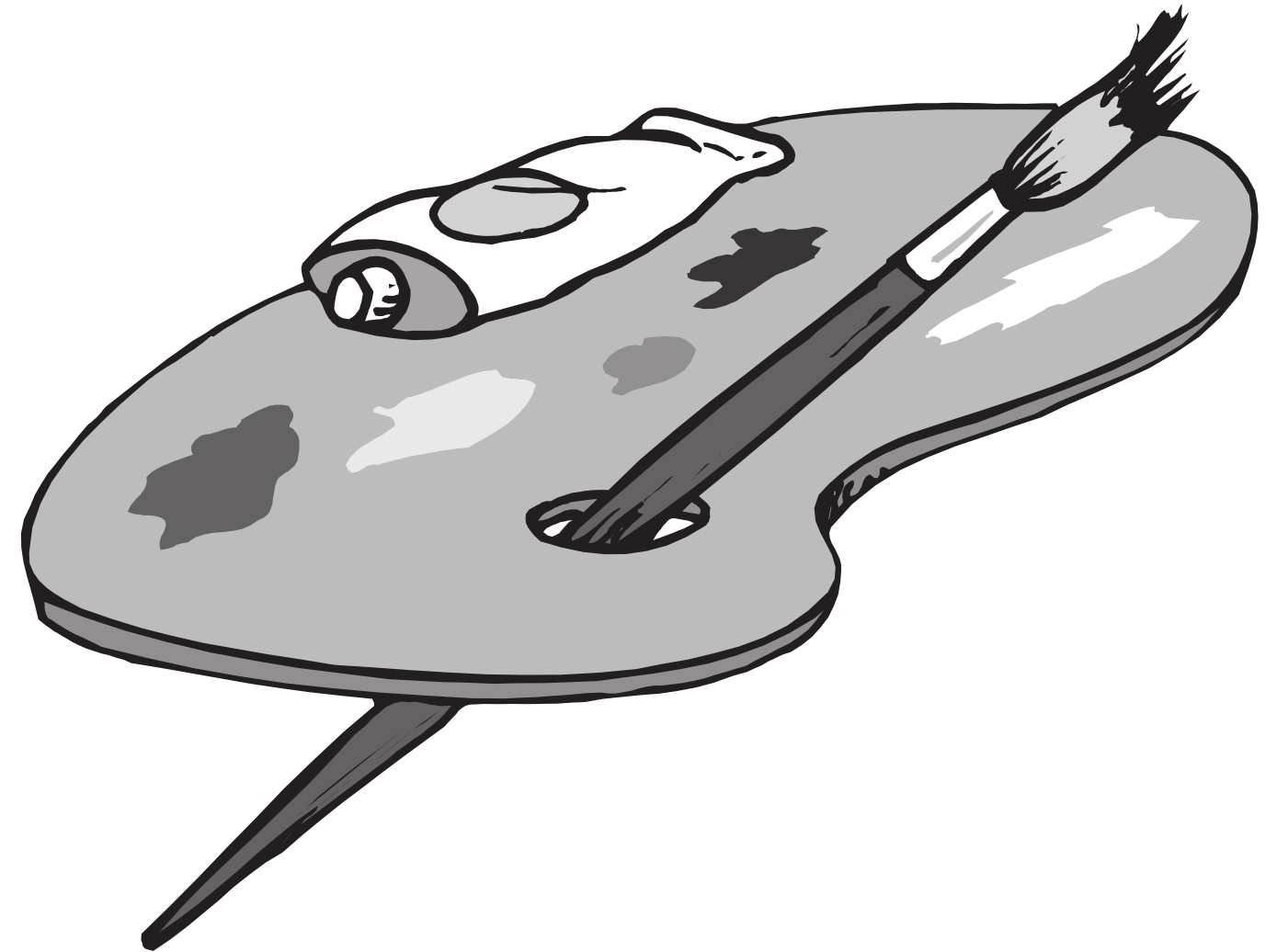
(iii) To represent something that is safe for the environment.

Colour

(iv) To represent that something is dangerous.

Colour

KI 4



Colours can be used for many different reasons and in many different situations.

(a) State an appropriate colour to use in the following situations.

(i) To represent health and vitality.

Colour

(ii) To represent that something is hot.

Colour

(iii) To represent that something is environmentally friendly.

Colour

(iv) To contrast with yellow.

Colour

(v) To harmonise with red.

Colour

KI 5

(b) State the effect created by using a receding colour for the background of a presentation drawing.

Effect

.....

KI 1

(c) State what must be added to a primary colour in order to obtain a tertiary colour.

Answer

KI 1

(d) State two tertiary colours that contain red.

Colour Colour.....

KI 2



Colour Matters for the Home

Knowledge of colour theory can be very useful to an interior designer as colours can be associated with different moods or situations.

(a) State which colour would represent:

(i) something that is happy;

Colour

(ii) something that is reliable;

Colour

(iii) something that is safe for the environment;

Colour

(iv) something that is dangerous.

Colour

KI 4

(b) State a tertiary colour that contains red and is in contrast with yellow.

Answer KI 1

(c) State a tertiary colour that contains blue and is in harmony with green.

Answer KI 1

(d) State two tertiary colours that contain orange.

Colour Colour KI 2

(e) State what must be added to a primary colour in order to obtain a tertiary colour.

Answer KI 1

