



Caldergleng High School

Technology Department

Building Drawing

Homework



Powerpoint 6
will help you
with this section

Homework to be completed on time
and returned in homework jotter.

An architect uses a CAD system to produce new house designs.

- (a) State one possible advantage, other than speed, to the architect of the availability of a CAD library of architectural symbols.

Answer

.....

KI 1

- (b) State two devices that could be used by the architect to place her existing manual drawings on to the computer hard disk.

Device 1

Device 2

KI 2

- (c) State the name of the type of view shown at A.

A

KI 1

- (d) State the names of the types of plan shown at B and C.

B

C

KI 2

- (e) State two computer storage devices that could be used to store CAG drawing files larger than 2MB.

Device 1

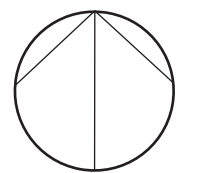
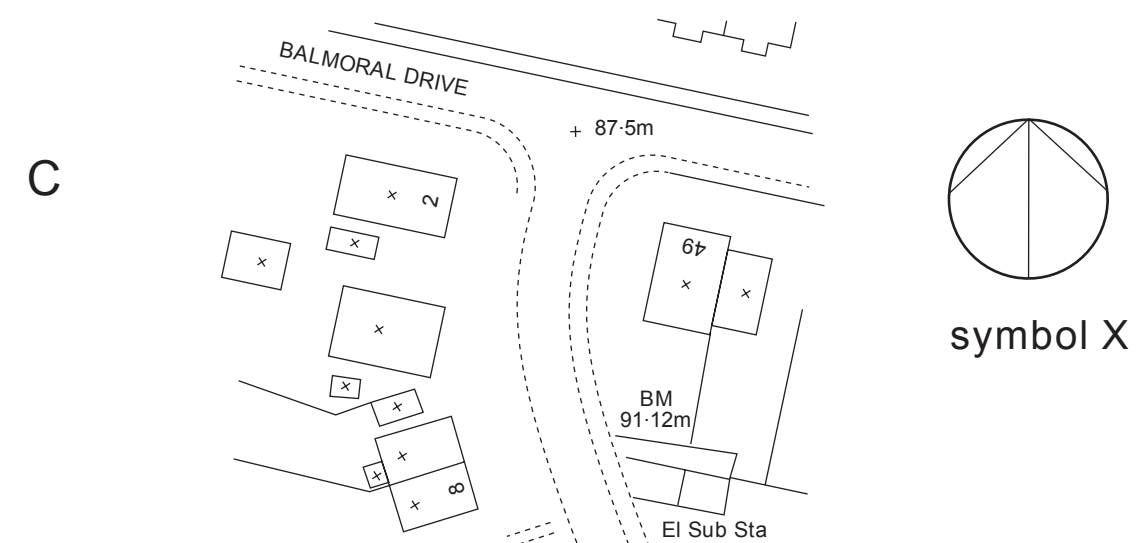
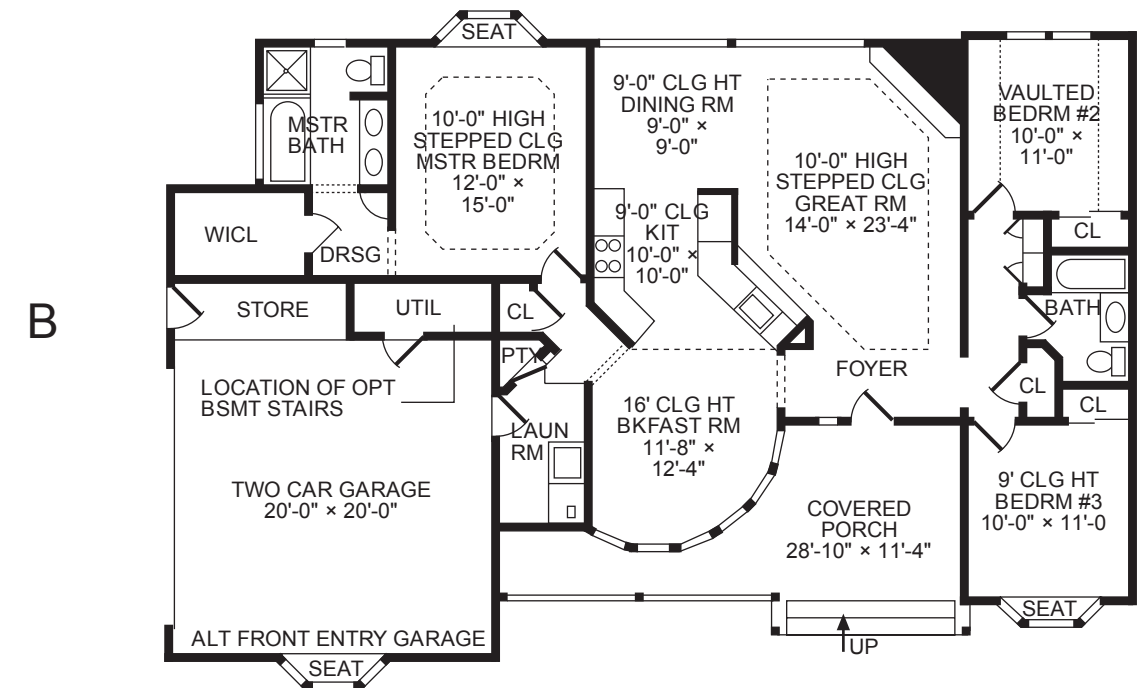
Device 2

KI 2

- (f) State the name given to the symbol X on view C.

symbol X

KI 1



symbol X

A pictorial view and plans of a house are shown opposite.

- (a) (i) State the type of pictorial view shown at A.

Pictorial View A

- (ii) State one reason the architect used this type of view.

Reason

..... KI 2

- (b) State the types of plan shown at B, C and D.

Plan B

Plan C

Plan D KI 3

- (c) From the list of scales given below, state an appropriate scale for Plan B.

1: 100

1: 500

1: 1250

1: 2500

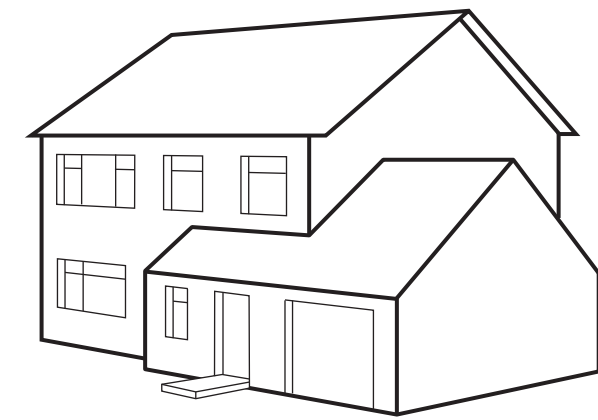
Scale

KI 1

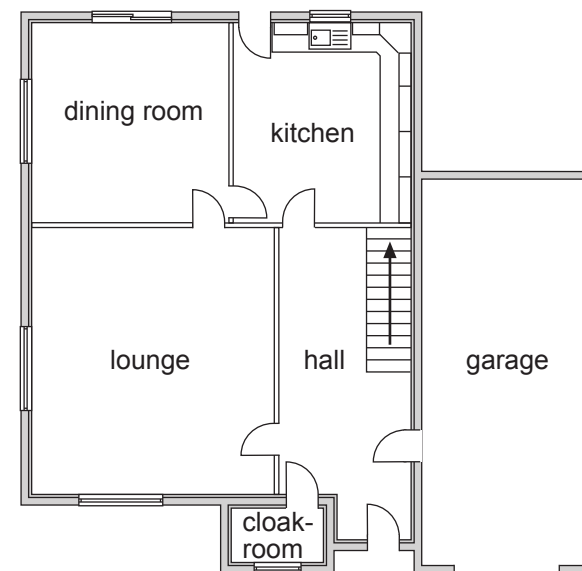
- (d) State what the symbol X on Plan C represents.

Symbol X

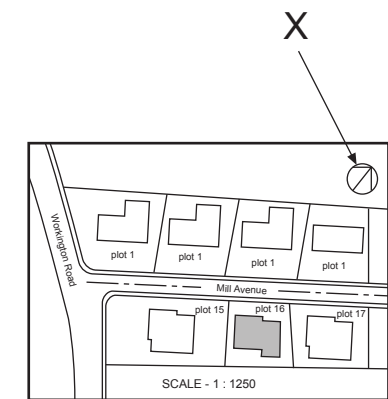
KI 1



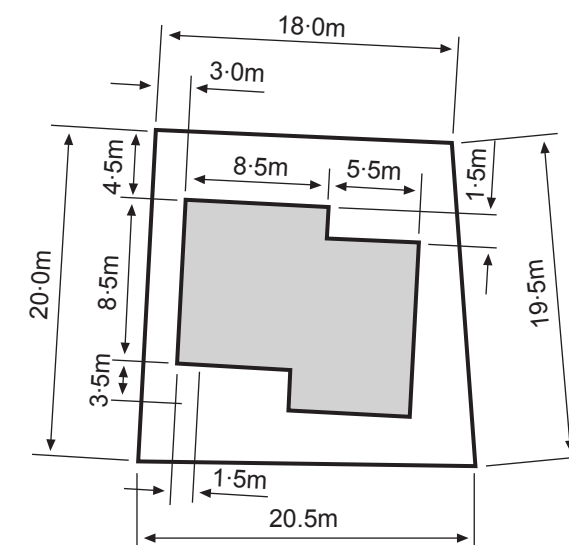
VIEW A



PLAN B



PLAN C



PLAN D

Three types of plans used in the building industry are shown.

Study these plans and answer the following questions.

(a) (i) State the name given to Plan A.

Plan A

(ii) I identify the symbols B, C, D, E, F and G used on this plan.

B C

D E

F G

(b) (i) State the name given to Plan B.

Plan B

(ii) State which of the following scales was used for this plan.

1:10 1:100 1:200 1:1250

Scale

(iii) I identify the symbol X shown on Plan B.

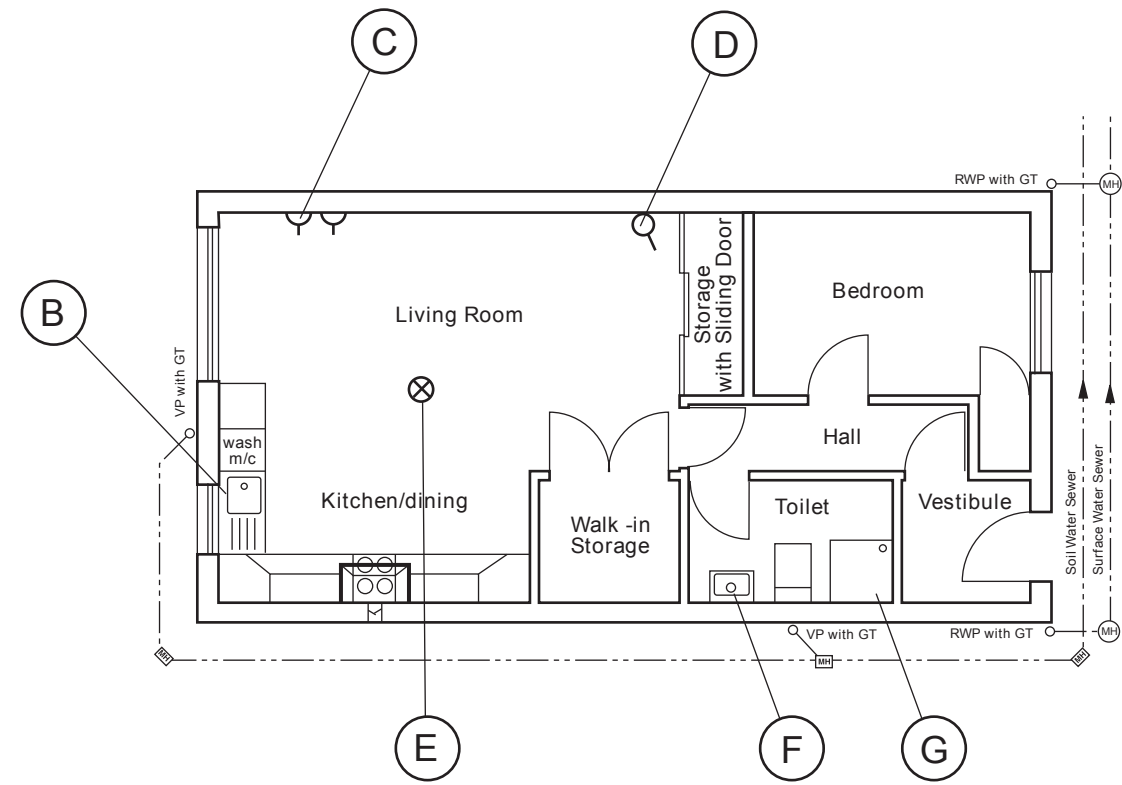
Symbol X

(c) State the name given to Plan C.

Plan C

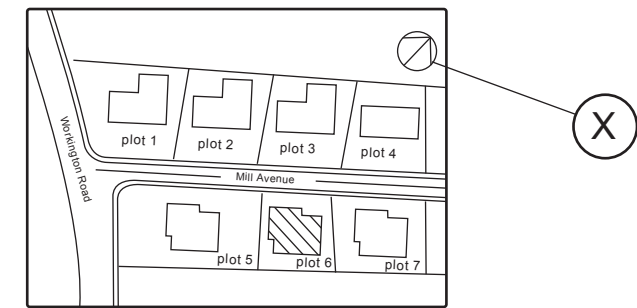
KI 1

KI 6



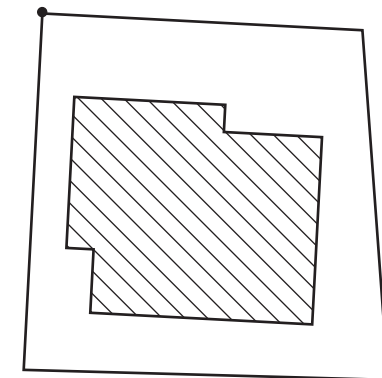
PLAN A

KI 3



PLAN B

KI 1



PLAN C

SCALE 1:250

Study the building drawings opposite.

(a) Identify the symbols A, B, C, D and E on the Floor Plan of the Kitchen.

A

B

C

D

E

KI 5

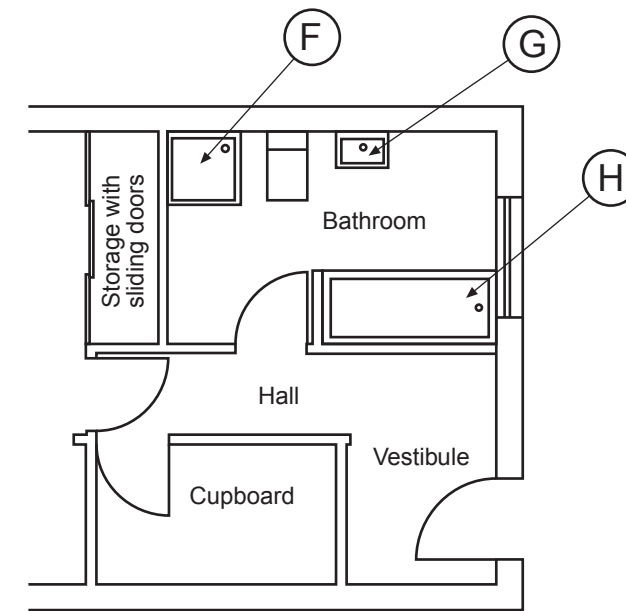
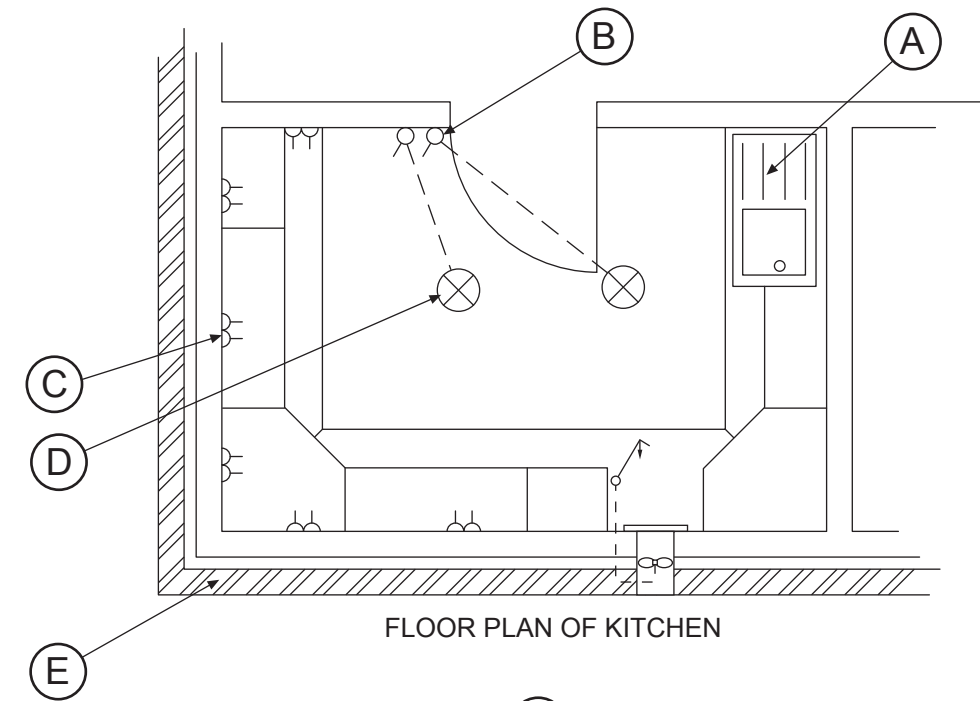
(b) Identify the symbols F, G and H on the Floor Plan of the Bathroom.

F

G

H

KI 3



Architects use BSi symbols to represent features on their drawings.

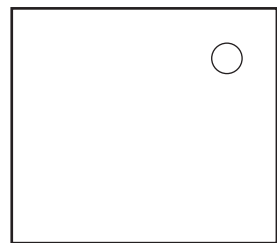
(a) State what each of the architectural symbols shown at A, B, C, D, E, F and G represents.

A B C

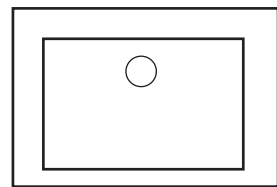
D E F

G

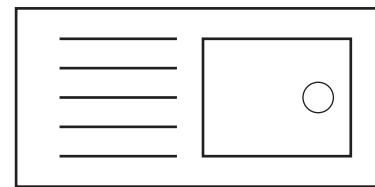
KI 7



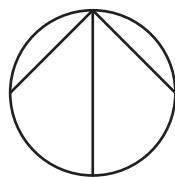
A



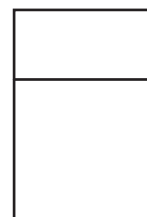
B



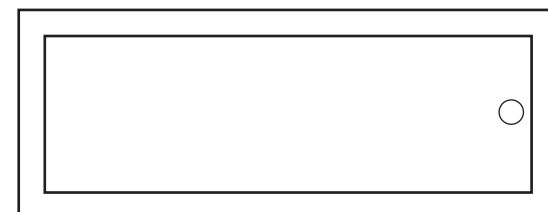
C



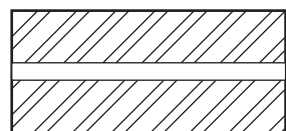
D



E



F



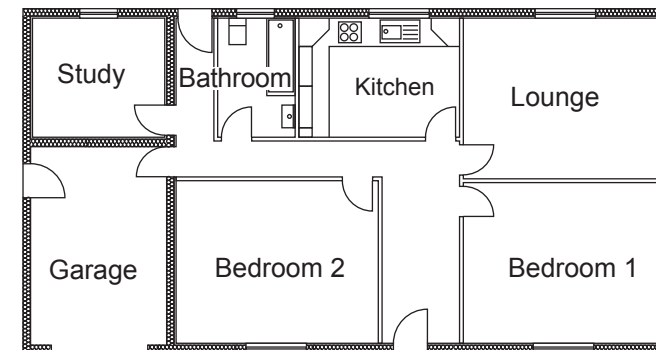
G

(b) Plans are used by architects to show different features and details.

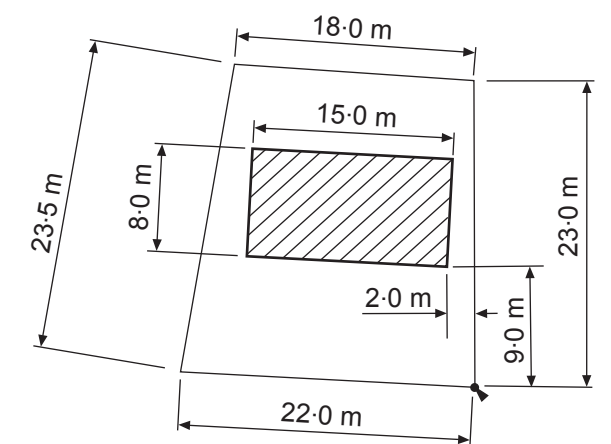
State the name of the plan types shown at H, I and J.

H I J

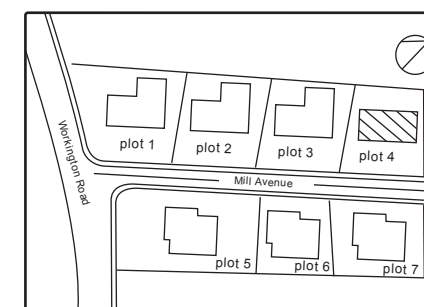
KI 3



H



I



J

The building industry uses plans and symbols to communicate information.

(a) State the name of the plan types shown at A, B and C.

Plan A

Plan B

Plan C

KI 3

(b) State the name of the BSi symbols D, E, F, G, H and I.

D

E

F

G

H

I

KI 6

(c) (i) State which of the following scales would be suitable for Plan B.

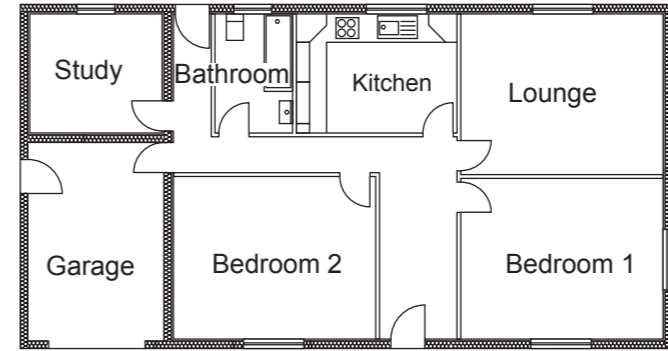
1:10 1:50 1:200 1:1250

Scale

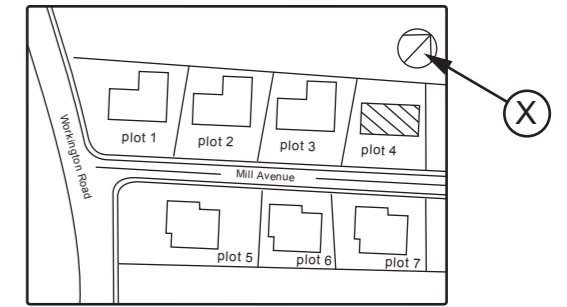
(ii) I identify the symbol X shown on Plan B.

Symbol X

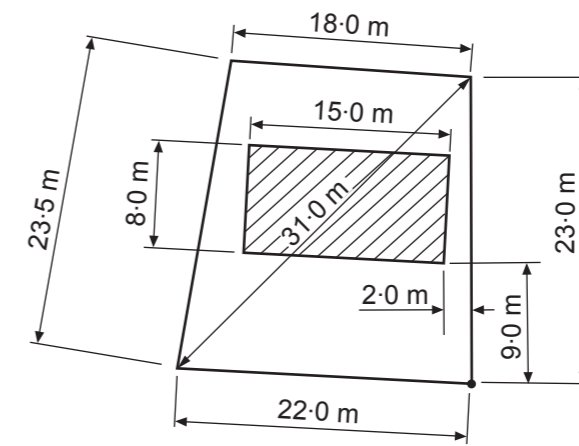
KI 2



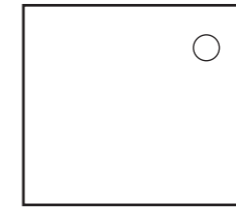
Plan A



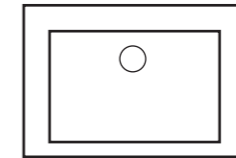
Plan B



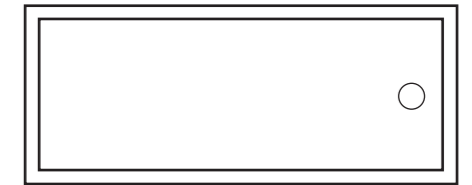
Plan C



D



E



F



G



H



I